
CITY OF KELOWNA

MEMORANDUM

File No.: 6120-20

Date: March 26th, 2008
To: City Manager
From: Parks Manager
Subject: New On and Off Leash Dog Parks

RECOMMENDATIONS:


THAT Council amends Council Policy No. 258 - Dog Walking and Dog On and Off-Leash Parks by designating the following parks (Maps Attached) as dog on leash parks:

1. Davie Park
2. Harris Park
3. Still Pond Park
4. Providence Park
5. Jewel Park
6. McCarren Park
7. Tulameen Park
8. Carney Park
9. Blair Pond Park
10. Cameron Park
11. Harvard Road Linear Park
12. Canyon Falls Park
13. Sunset Drive Park;

AND THAT a portion of Kinsmen Park (Map 14 attached to the report from the Parks Manager, dated March 26, 2008) be designated as an off leash dog park on a trial basis from May 15 to September 15, 2008;

AND THAT a portion of Duggan Park (Map 15 attached to the report from the Parks Manager, dated March 26, 2008) be designated an on leash dog park and that a portion (Map 15 attached) also be designated as a small dog off leash dog park on a trial basis from May 15 to September 15, 2008;

AND THAT until the park lands are required for other park purposes a portion of Rutland Recreation Park (Map 16 attached to the report from the Parks Manager, dated March 26, 2008) be designated as an off leash dog park on a trial basis from May 15 to September 15, 2008;



AND THAT a portion of Knox Mountain Park (Map 17 attached to the report from the Parks Manager, dated March 26, 2008) be designated as an off leash dog park on a trial basis from May 15 to September 15, 2008;

AND FURTHER THAT the 2008 budget be amended to fund the necessary improvements associated with the above designations by transferring \$60,000 from account 10-3760-P5981 Bluebird Lift Station.

BACKGROUND:

On-Leash Parks

Forty-Seven (47) parks currently allow dogs on-leash; the addition of the 13 parks listed above will bring the total number of on-leash dog parks to 60. These new parks have suitable trails that can accommodate dogs on-leash and are consistent with other on-leash parks. Dogs are not permitted within 10 metres of any playground and leashes should not be greater than 2 metres (6 feet).

Off-Leash Beach Parks – Kinsmen Park

Currently the only beach park that permits dogs off-leash is Cedar Creek Park. The dog community has been requesting additional access; finding an ideal location is challenging due to a number of reasons including water quality (recent research indicated fecal coli form from dogs is present at some beach parks), conflict between dogs and people at busy beach parks during the summer months, adequate parking and impact to surrounding neighbourhood. Although Kinsmen Park is not an ideal park for allowing dogs on leash it is the most suitable when comparing it to other beach parks except for Cedar Creek Park which already allows dogs off leash. We are also recommending a trial period between May 15 and September 15 to determine if the park is truly suitable to accommodate off-leash dogs.

Kinsmen Park is not well utilized as a swimming beach as compared to other beach parks. We will also sign the area so that the public is aware that dogs are permitted in the lake at this location.

The trial period will encompass the extreme hot summer months while still allowing Parks crews to rehabilitate the lawn if required in the fall; the trial will also provide immediate residents, park users and dog owners to provide input and allow staff to assess any impact.

The suggested area (See map 14) will be fenced to ensure the safety of other park users.

Small Dog Off Leash Park – Duggan Park

Parks administered a survey to home owners adjacent to Duggan Park in 2007. The surveys were hand delivered to more than 40 homes; 12 responses were received with 6 in favour of the Small Off leash Dog Park and 6 opposed. Four of those opposed were concerned about dogs and traffic; however the area will be fenced alleviating this concern. Only two respondents were opposed to having dogs in the park. Staff recommend a trial of the small dog off leash park to determine if the park is suited for this purpose. It is hoped the addition of this Small Dog area will increase traffic to the park and help to discourage inappropriate behaviour. The Park is not large enough to accommodate a Large Dog Off Leash Park. See attached map 15 for location.

Off-Leash Dog Parks - Rutland Recreation Park and Knox Mountain

Currently the city has five off-leash dog parks; staff has been working with the Dog Advisory Committee to identify additional sites for off-leash parks. The main concern for the proposed off-leash

park outlined by Map 16 within Rutland Recreation Park is the potential for increased demand for parking. We recommend that this park be approved on a trial basis. Since this area is used a few times per year for over flow parking during major tournaments, dogs will be restricted during that time.

The area proposed within Knox Mountain Park outlined by Map 17 is along the entrance road to the park and expected to have the least amount of impact on the park. Fencing will be necessary to separate dogs off leash and vehicles. The Friends of Knox Mountain agree that this area may be suitable for dogs off leash.

All parks will be signed to inform the public of the type of dog park and in the cases where trials are being conducted signs will outline how the public can provide feedback. In addition the website will be updated and a news release issued. Fences will be installed at all proposed off-leash dog parks; garbage cans and dog bag dispensers will be installed in all new dog parks.

INTERNAL CIRCULATION TO: Bylaw Enforcement, City Clerk, Finance

EXISTING POLICY: Bylaw No. 6819-91 and Council Policy No. 258

FINANCIAL/BUDGETARY CONSIDERATIONS:

The cost to fund these recommendations is estimated at \$60,000. The Wastewater Manager has advised that the cost to fund the Bluebird Lift Station improvements will be less than originally estimated therefore funds are available for transfer from the 2008 Bluebird Lift Station project.

PERSONNEL IMPLICATIONS:

New signs, garbage cans and dog bag receptacles will be located in all new dog park areas and implemented by staff. Some Off-Leash areas will require fencing to be constructed with a joint effort between staff and the Dog Advisory Committee members and volunteers.

EXTERNAL AGENCY/PUBLIC COMMENTS: The Dog Advisory Committee is in favour of these new dog parks. Friends of Knox Mountain are in favour of finding an area within Knox Mountain Park that would allow for an Off Leash Dog Park that has a minimal impact on the park. Duggan Park survey indicates a 50/50 split in support of the Small Dog Park.

COMMUNICATIONS CONSIDERATIONS:

All parks will be signed to inform the public of the type of dog park and in the cases where trials are being conducted how the public can provide feedback. In addition the website will be updated and a news release issued.

Considerations that were not applicable to this report:

LEGAL/STATUTORY AUTHORITY:

LEGAL/STATUTORY PROCEDURAL REQUIREMENTS:

ALTERNATE RECOMMENDATION:

TECHNICAL REQUIREMENTS:

Submitted by:

A handwritten signature in blue ink, appearing to read "J. Creron", with a large, stylized loop at the beginning.

J Creron, Parks Manager

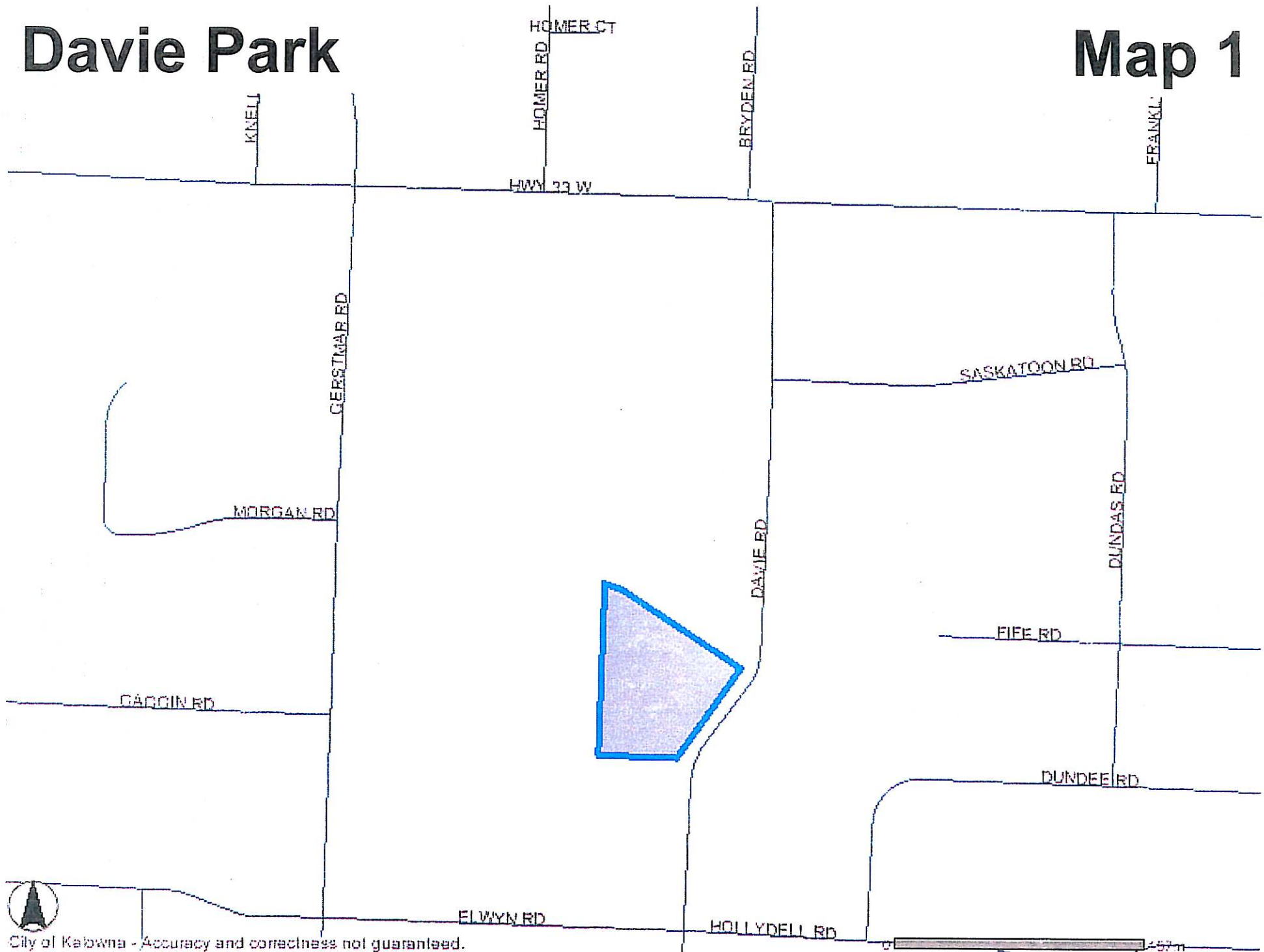
Approved for Inclusion:

A small, handwritten signature in black ink, possibly reading "J.S.", with a loop and a dot.

cc: Director, Recreation, Parks and Culture
Parks Division
Bylaw Enforcement
City Clerk
Financial Planning Manager

Davie Park

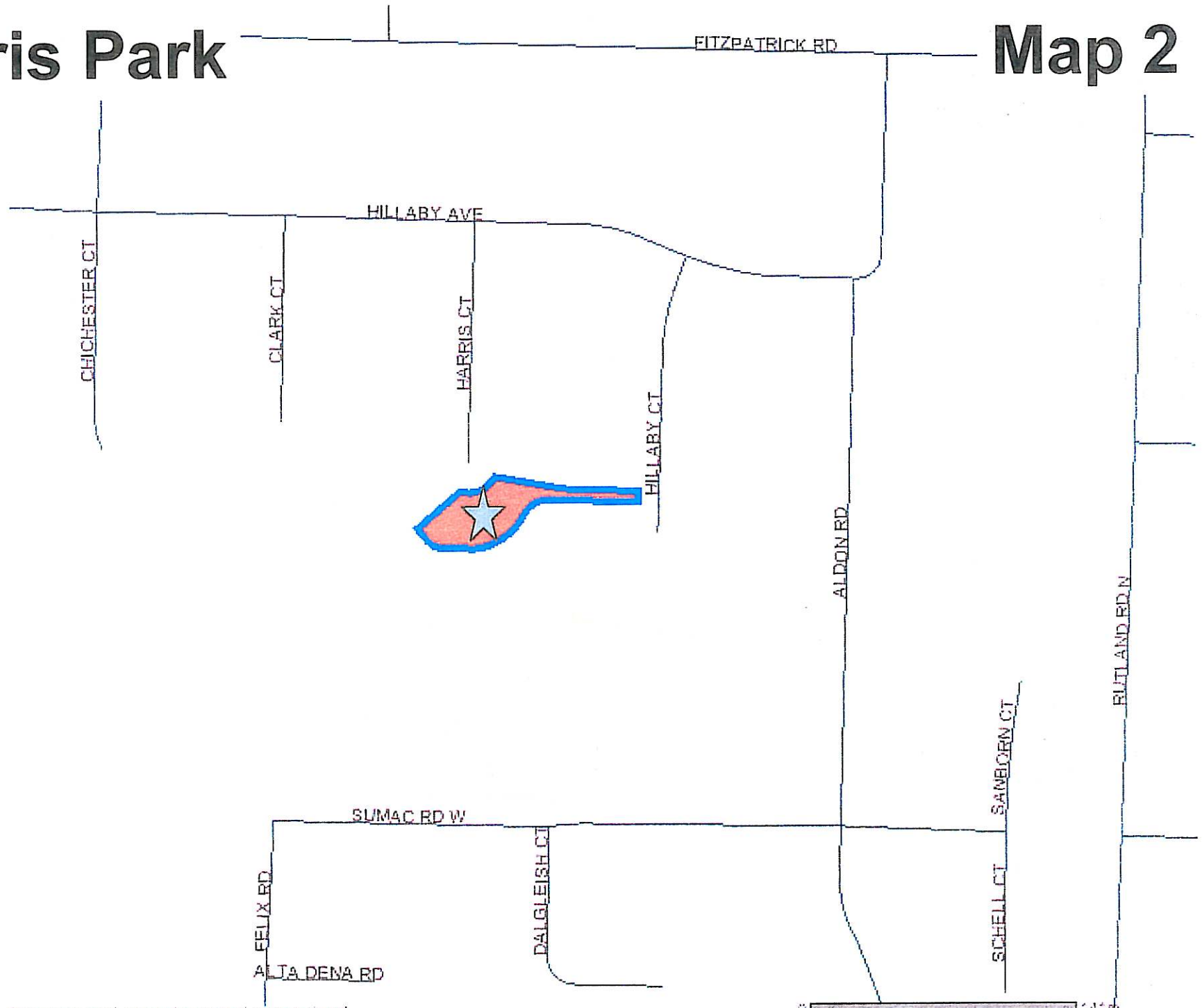
Map 1



City of Kelowna - Accuracy and correctness not guaranteed.

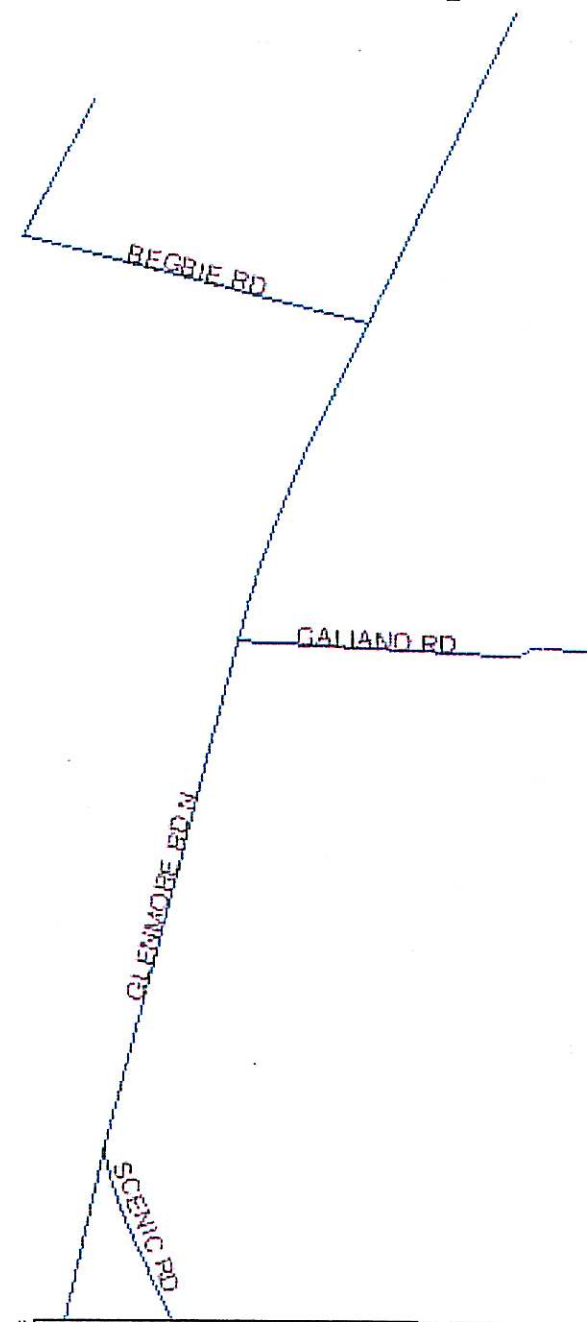
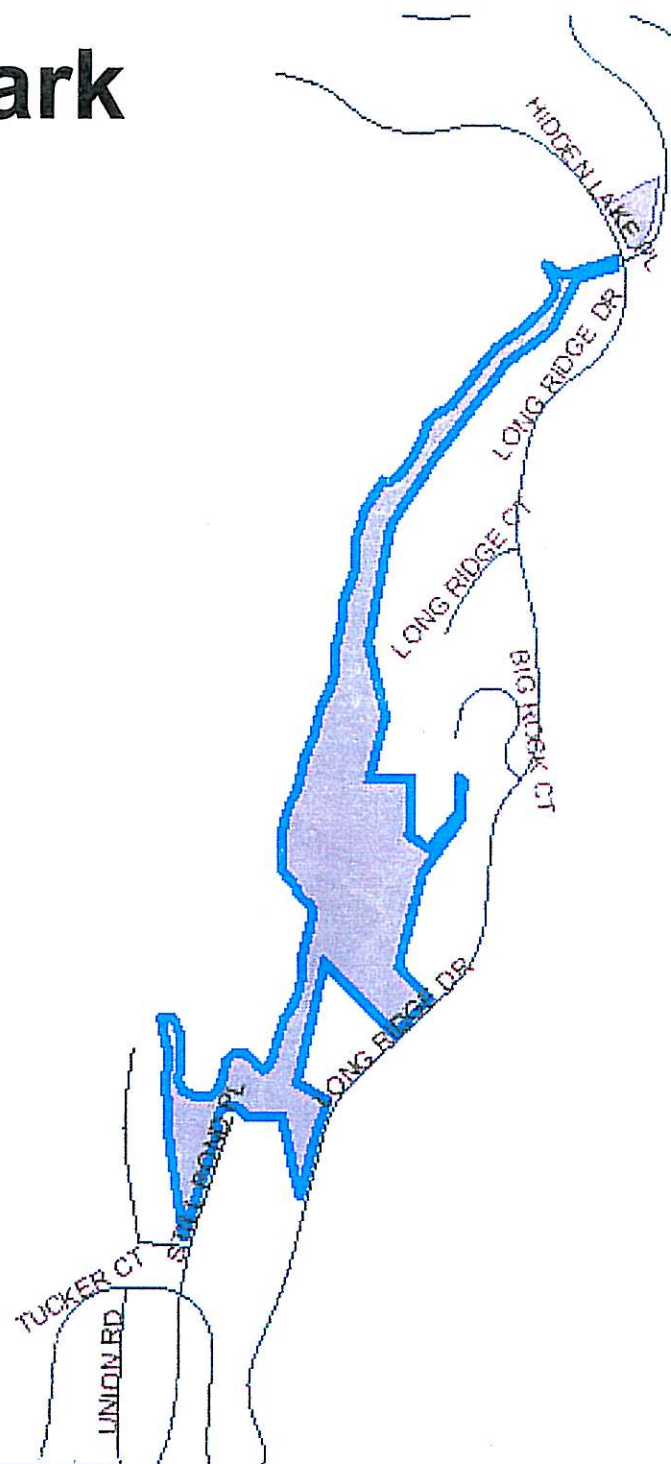
Harris Park

Map 2



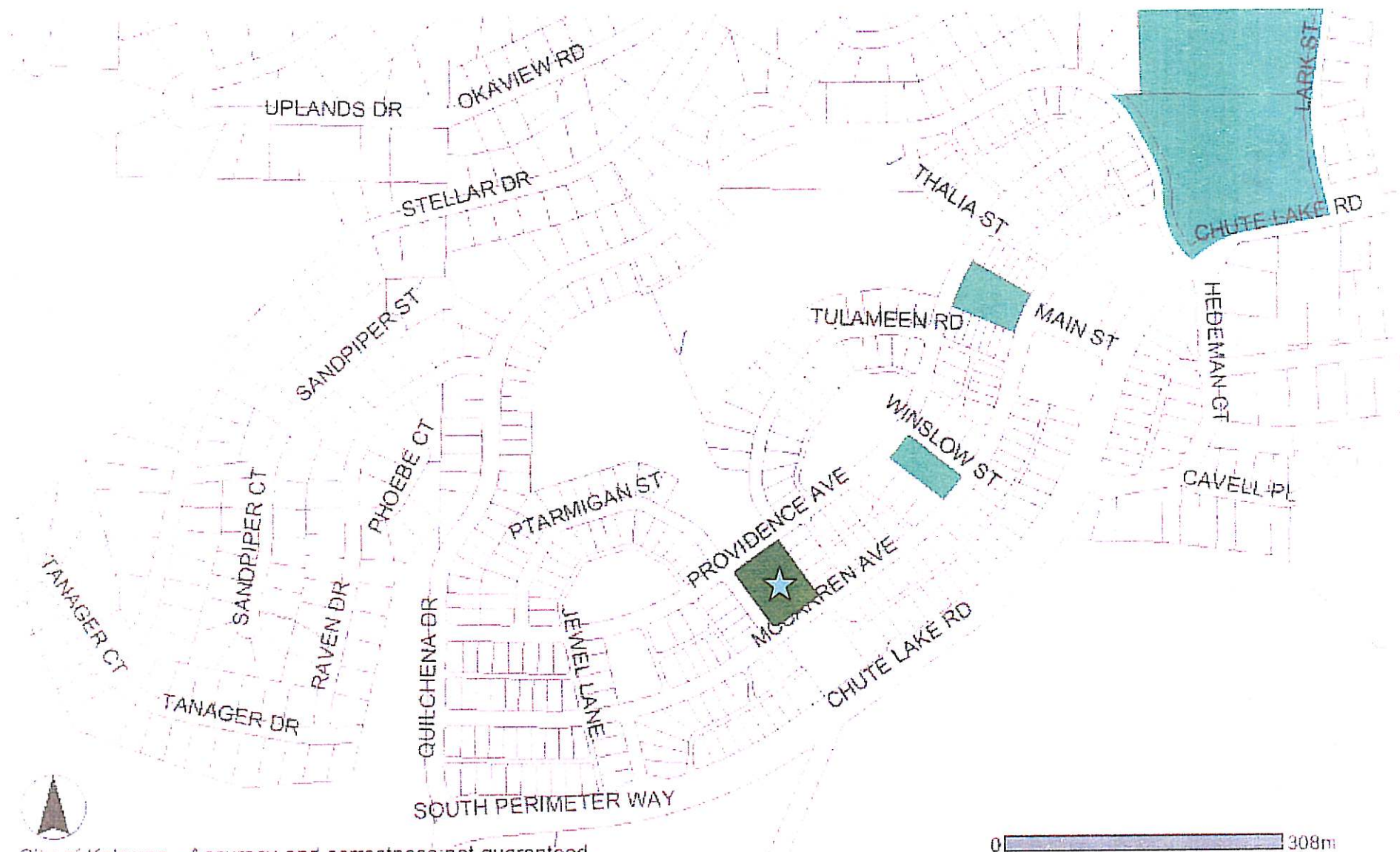
Still Pond Park

Map 3



Providence Park

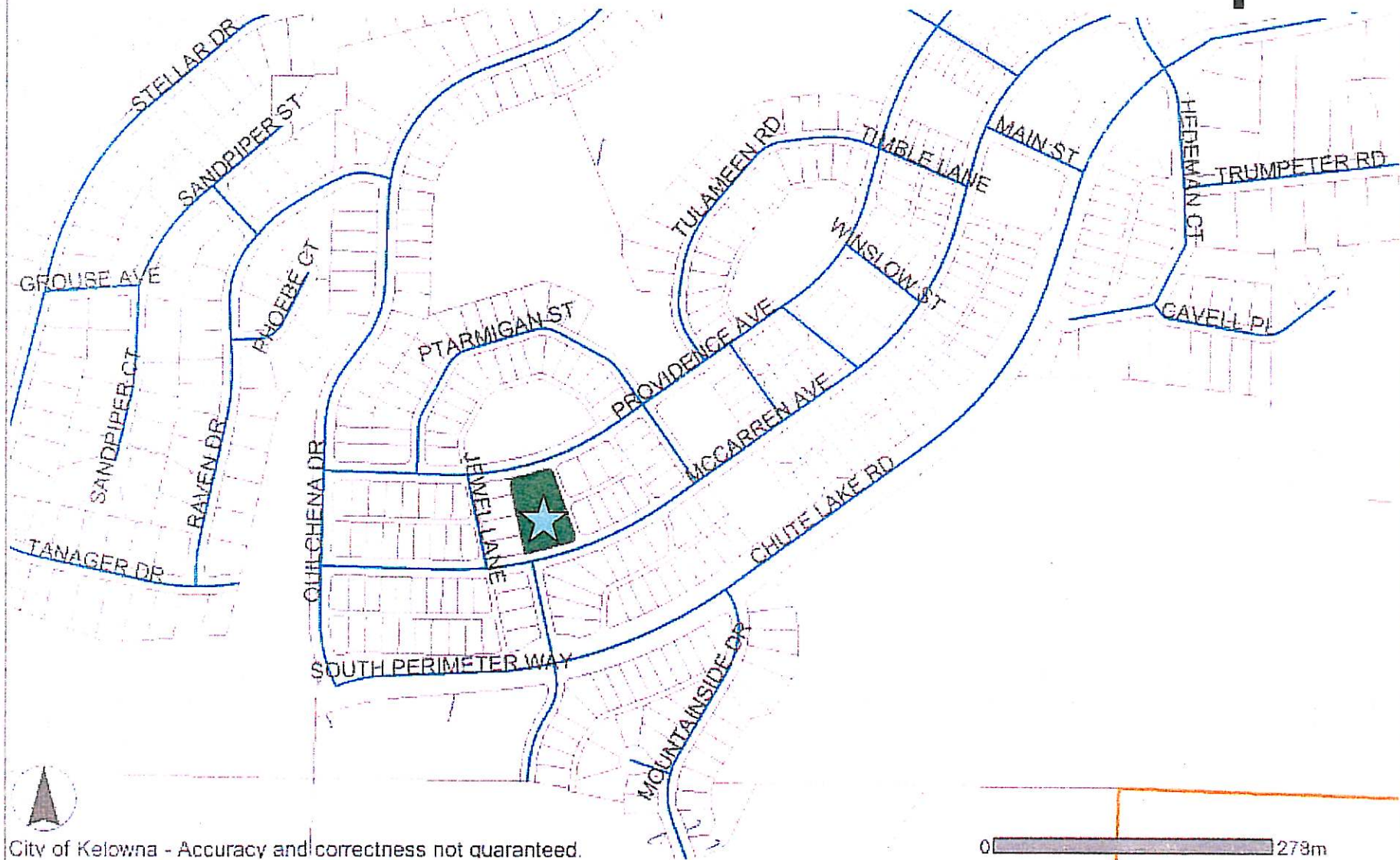
Map 4



City of Kelowna - Accuracy and correctness not guaranteed.

Jewel Park

Map 5

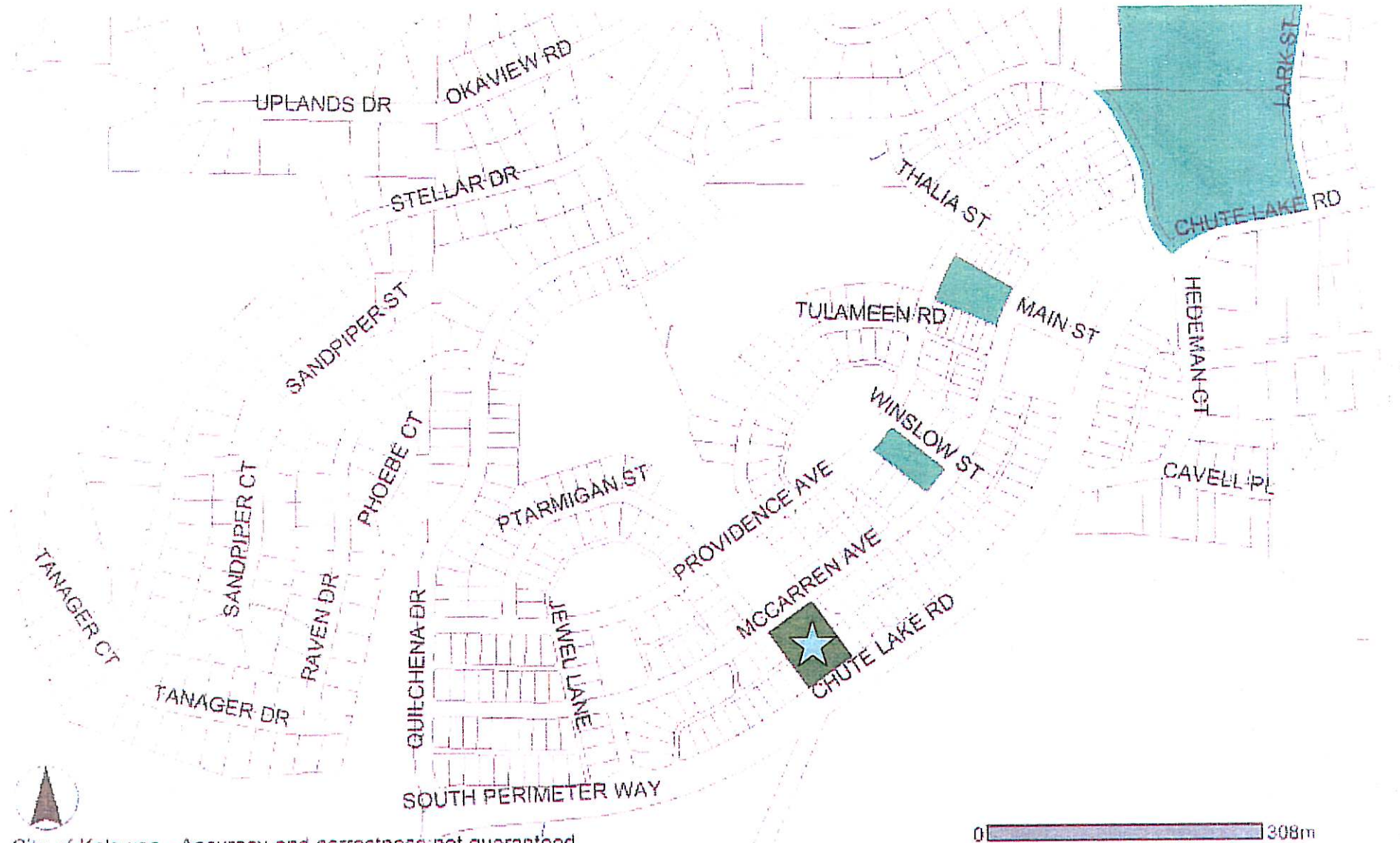


City of Kelowna - Accuracy and correctness not guaranteed.

January 30, 2007

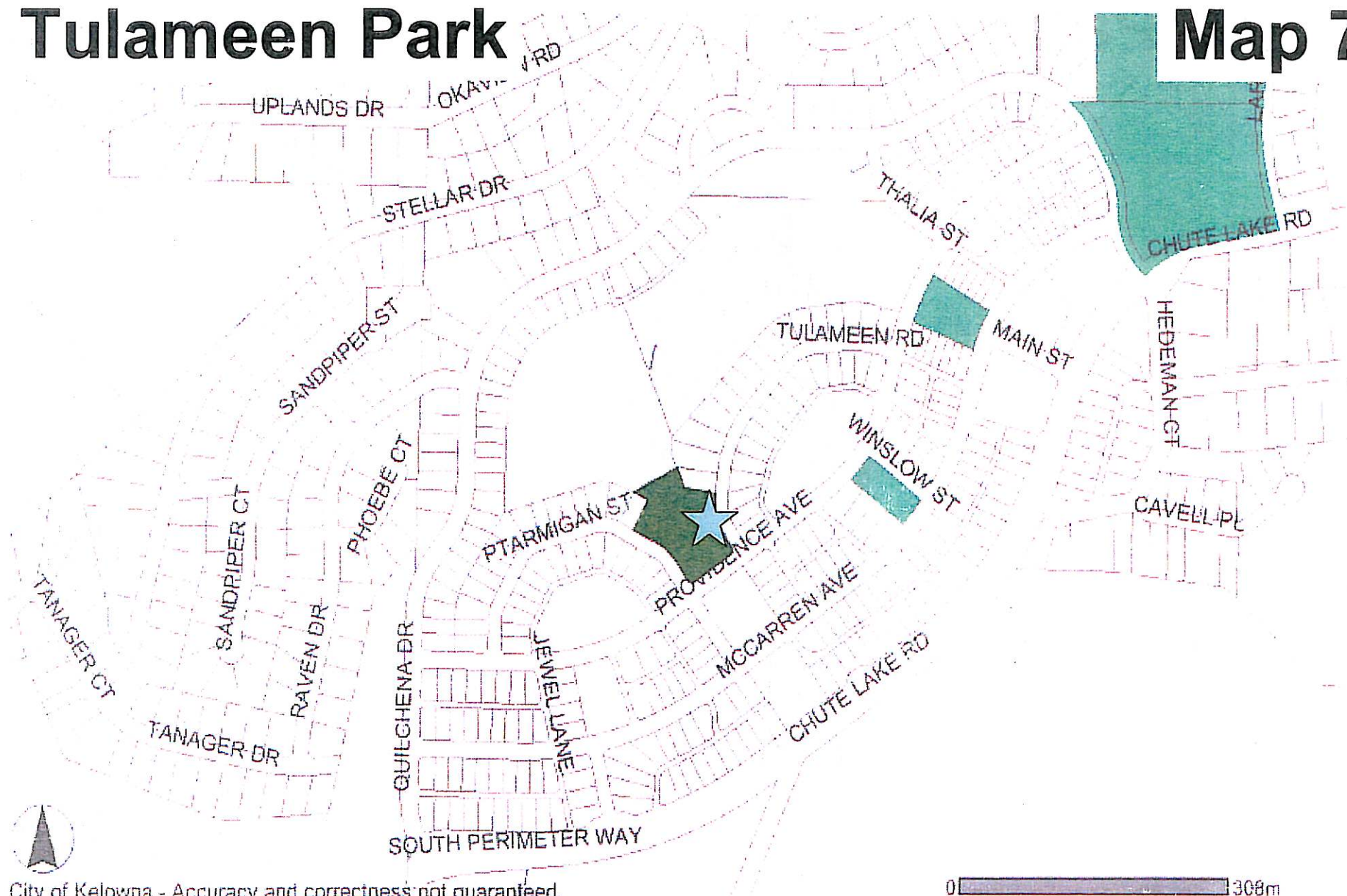
McCarren Park

Map 6



Tulameen Park

Map 7

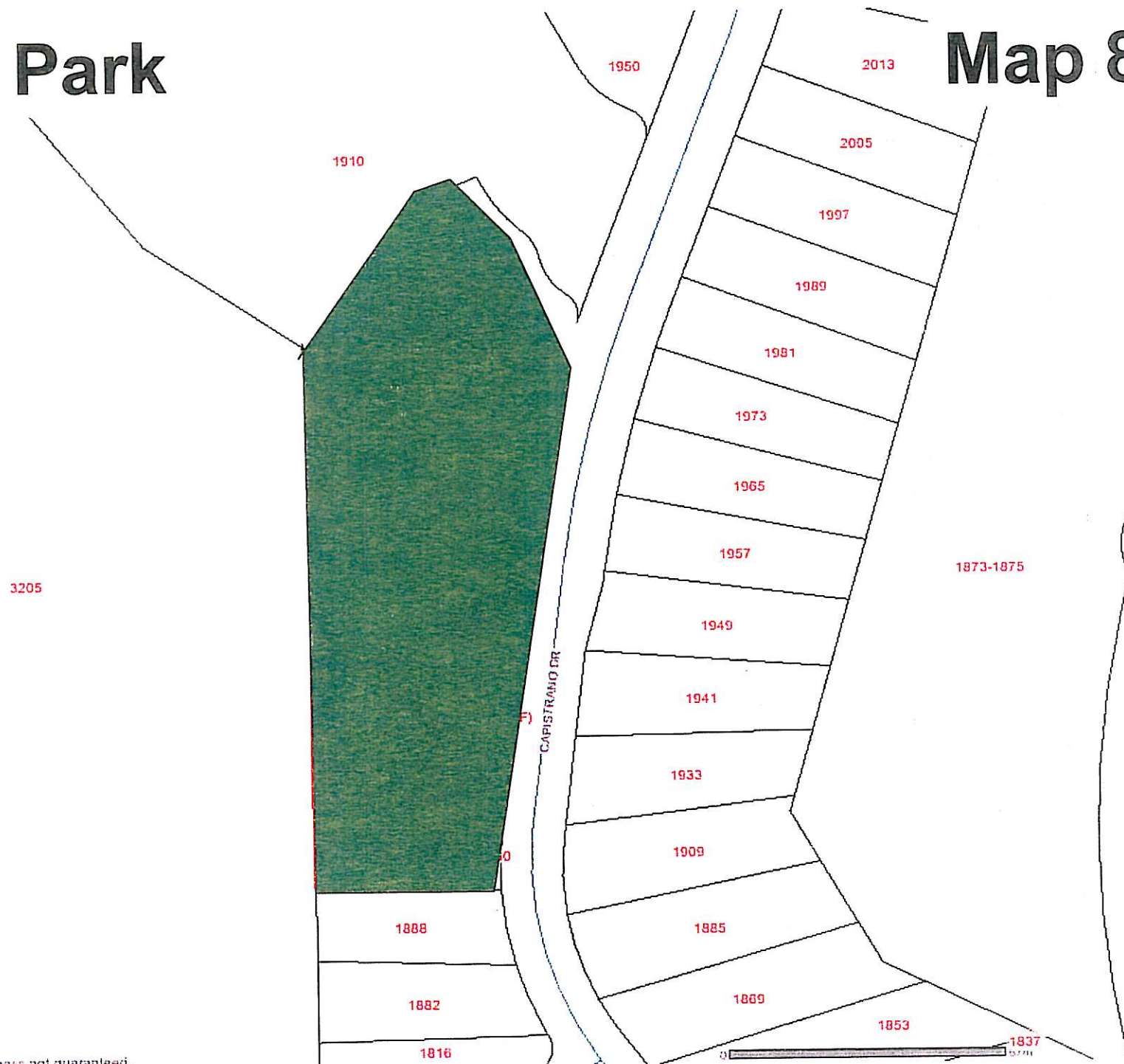


City of Kelowna - Accuracy and correctness not guaranteed.

0 300m

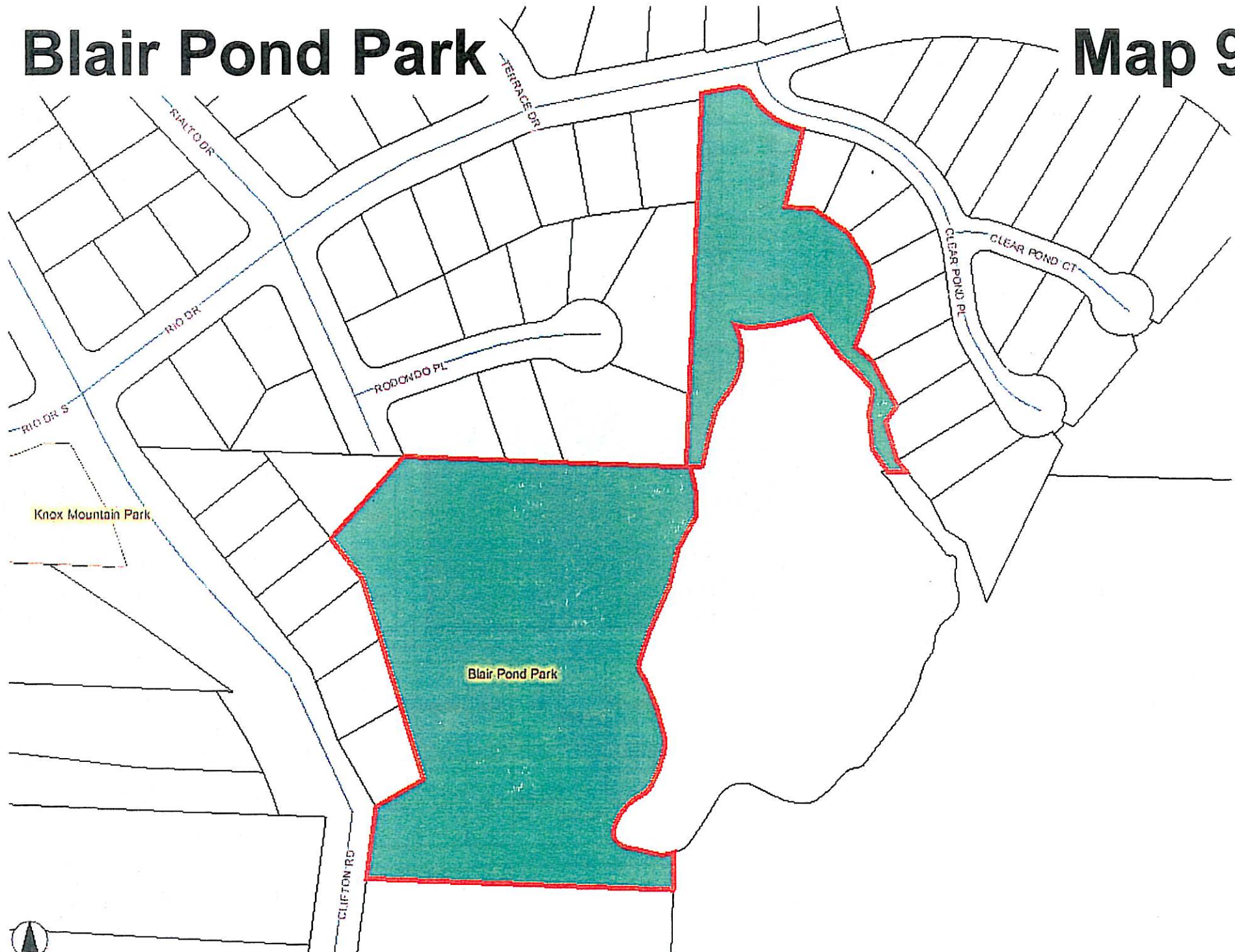
Carney Park

Map 8



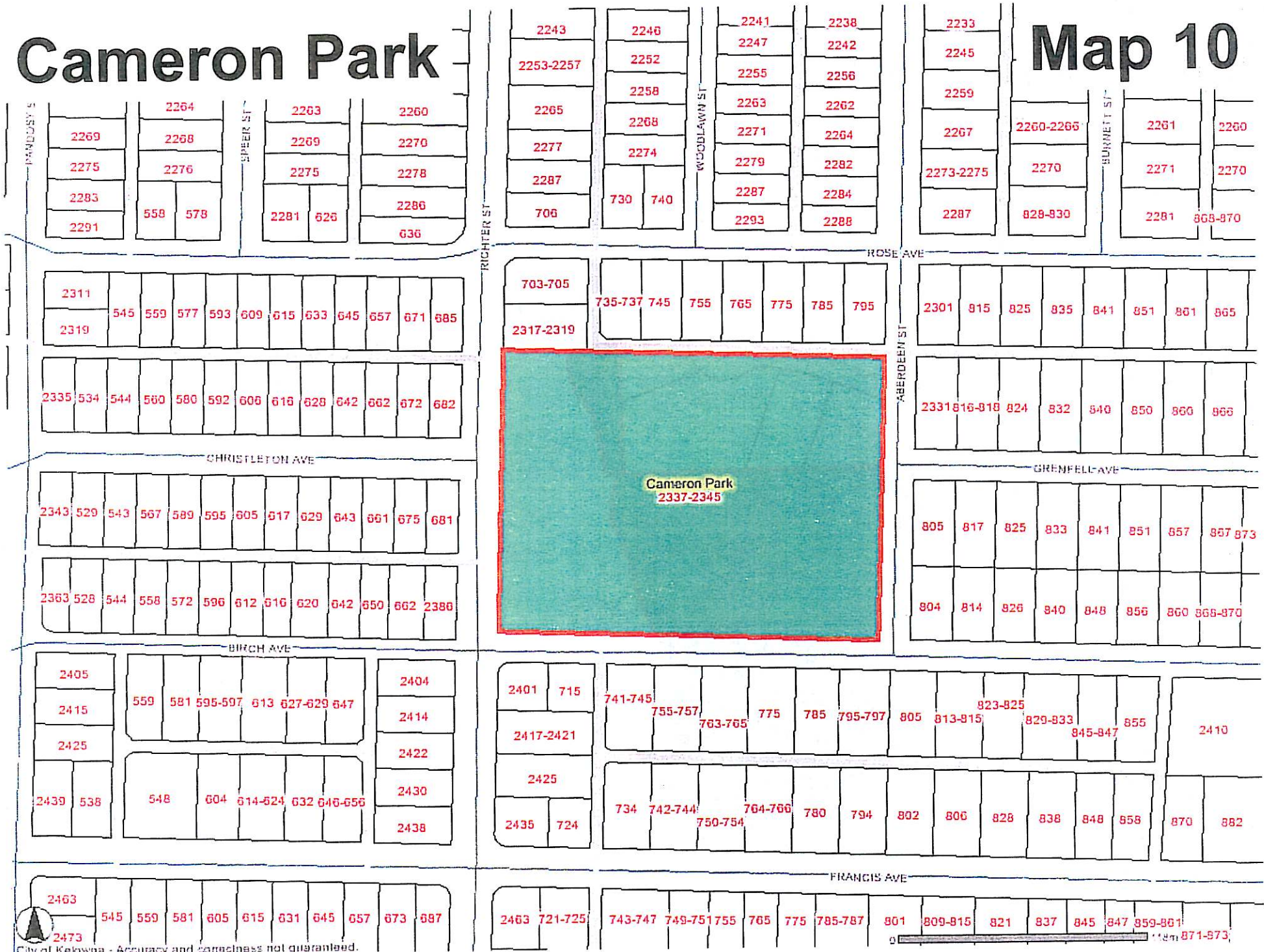
Blair Pond Park

Map 9



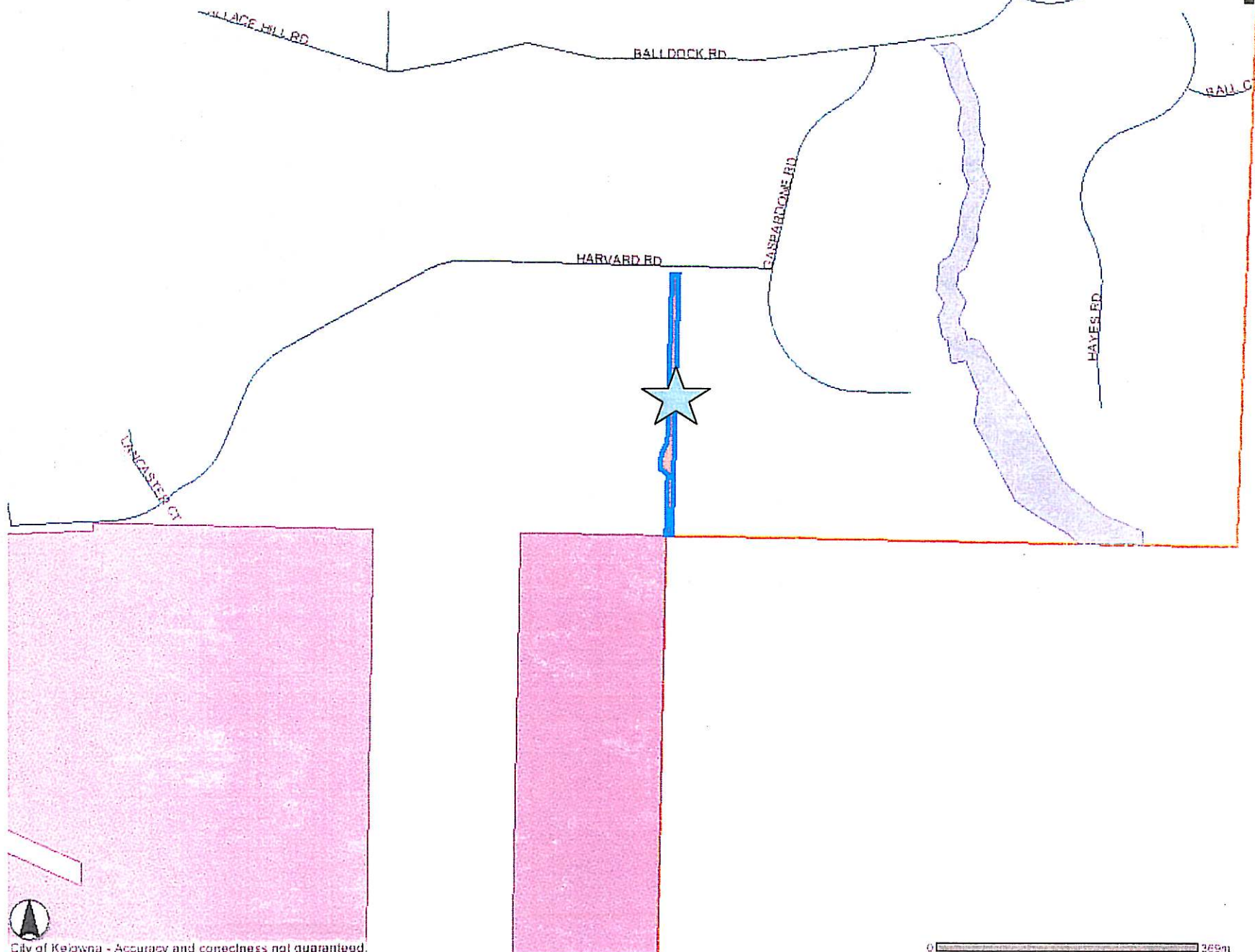
Cameron Park

Map 10



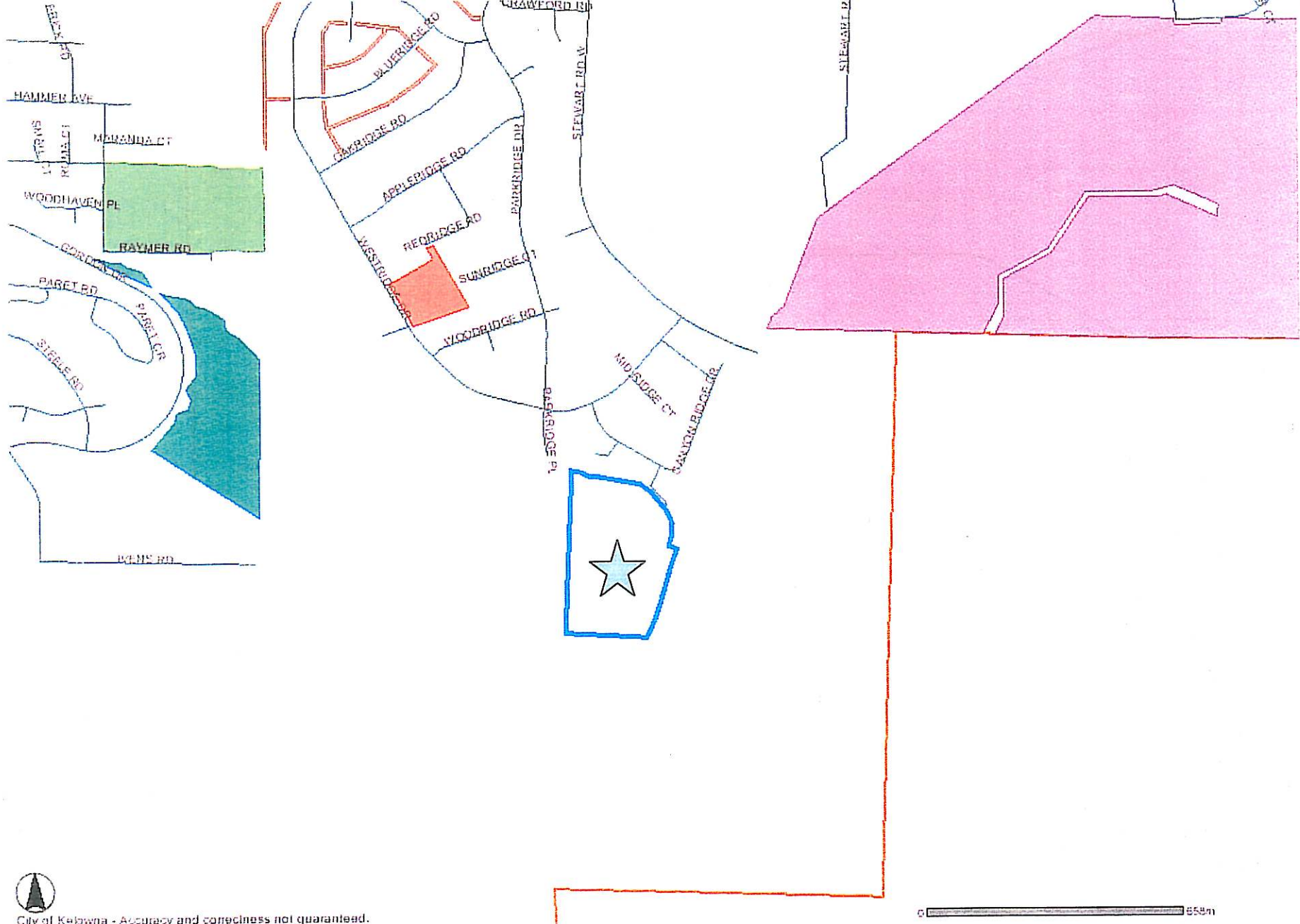
Harvard Road Linear Park

Map 11



Canyon Falls Park

Map 12



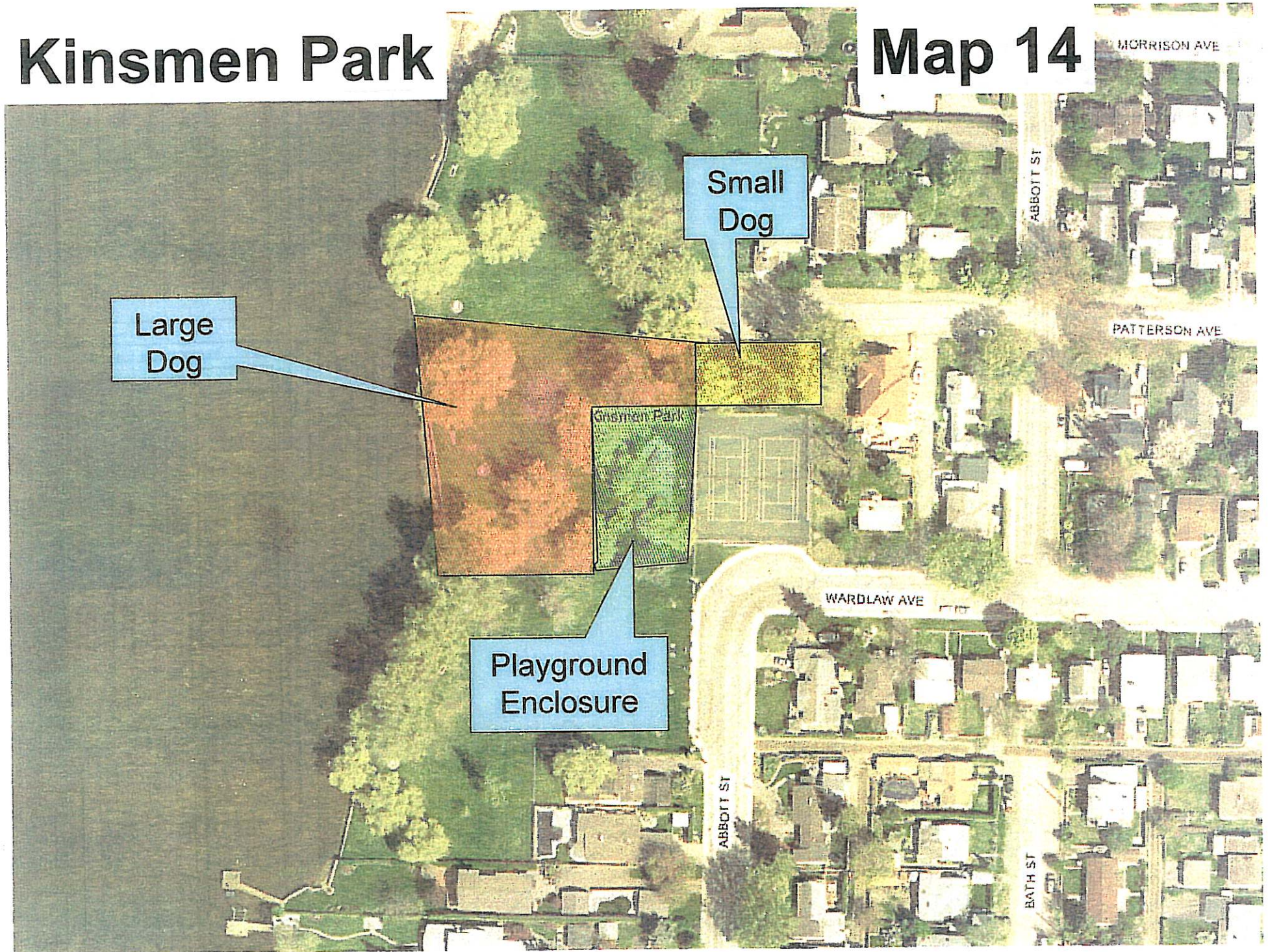
Sunset Drive Park

Map 13



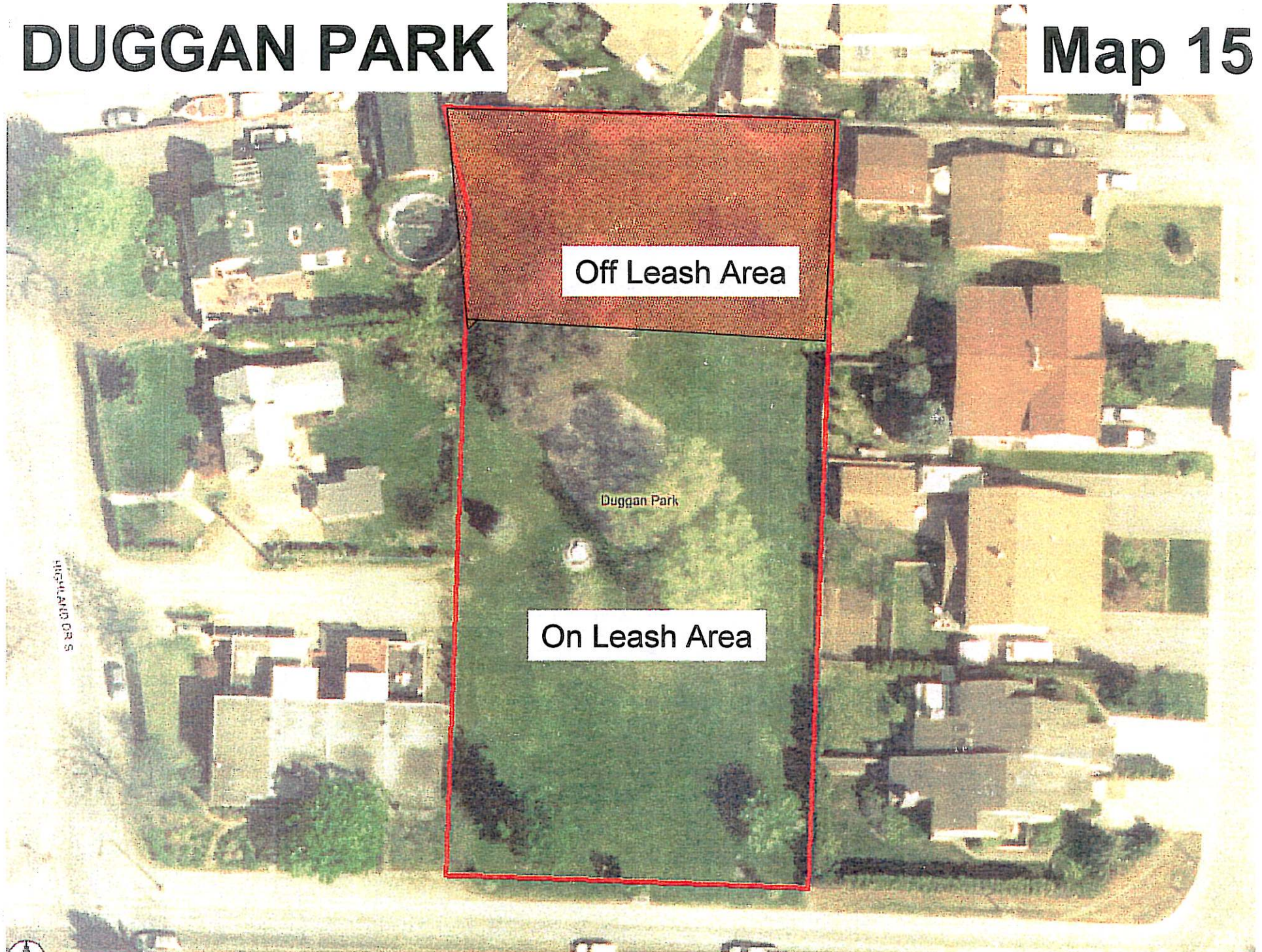
Kinsmen Park

Map 14



DUGGAN PARK

Map 15



Rutland Recreation Park

Map 16



Knox Mountain Park

Map 17



